

CHELAN II



A



B

3,652sf-3,662sf

Bedrooms: 5-6

Bathrooms: 2.5-3.5

2 Car Garage

The six bedroom Chelan II, is quite possibly the perfect family home. The foyer leads you in past the living room that can also be configured as an optional den. Continue past the powder room and dining room to the family room and kitchen. The main floor also features the large master suite with walk-in closet, his/her vanity, tub and shower. The centrally located utility/mud room rounds out this floor. Upstairs you'll find five additional bedrooms and a full bath with double sinks. There's also a huge loft for even more space to spread out and if that isn't enough, there's also a large bonus/media room that's perfect for a home theater. This versatile floor plan can also be configured with an optional second Master Suite on the upper floor. If you're looking for space, amenities and a high quality home, look no further than the Chelan II.



WWW.PACIFICRIDGEHOMES.COM

Rendering is artist's conception and are not intended to be an actual depiction of the home or its surroundings. Specifications subject to change without notice. Square footages are approximate.

CHELAN II



11/16/2011

Elevation A
 Total Sq. Ft. - 3,662
 Bedrooms: 5-6
 Bathrooms: 2.5-3.5
 2 Car Garage



Elevation B
 Total Sq. Ft. - 3,652
 Bedrooms: 5-6
 Bathrooms: 2.5-3.5
 2 Car Garage

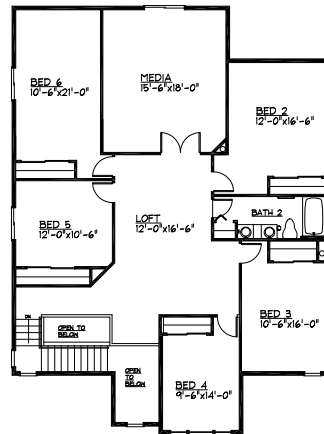
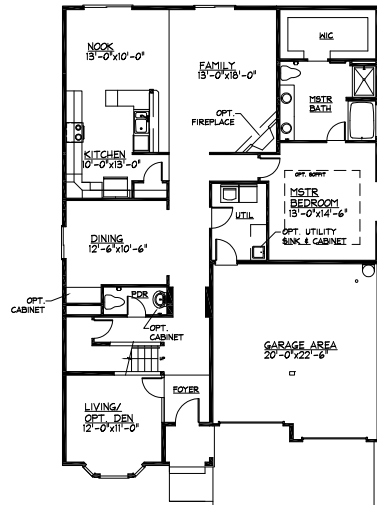


Main Floor

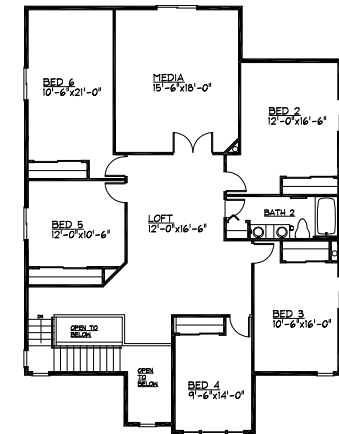
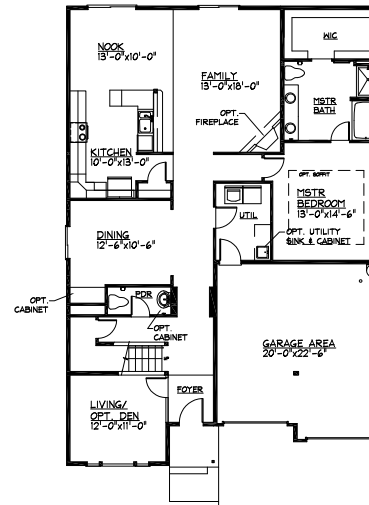
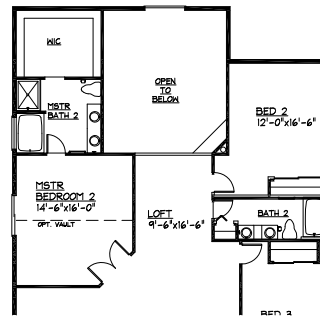
Second Floor

Main Floor

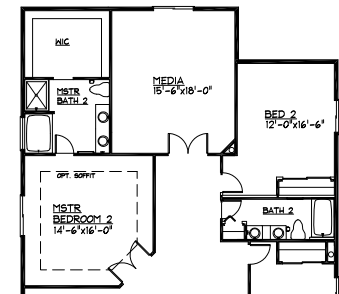
Second Floor



Second Floor - 5 Bed w/ Master Option



Second Floor - 5 Bed w/ Master Option



Lot Subdivision Initials Date

Lot Subdivision Initials Date

Floor plan layout may be mirrored at construction due to site conditions. Pacific Ridge Homes reserves the right to make modifications or changes to maps, prices, plans, specifications, materials, features, availability, and colors without notice. Dimensions and square footages are approximate.

